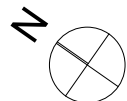
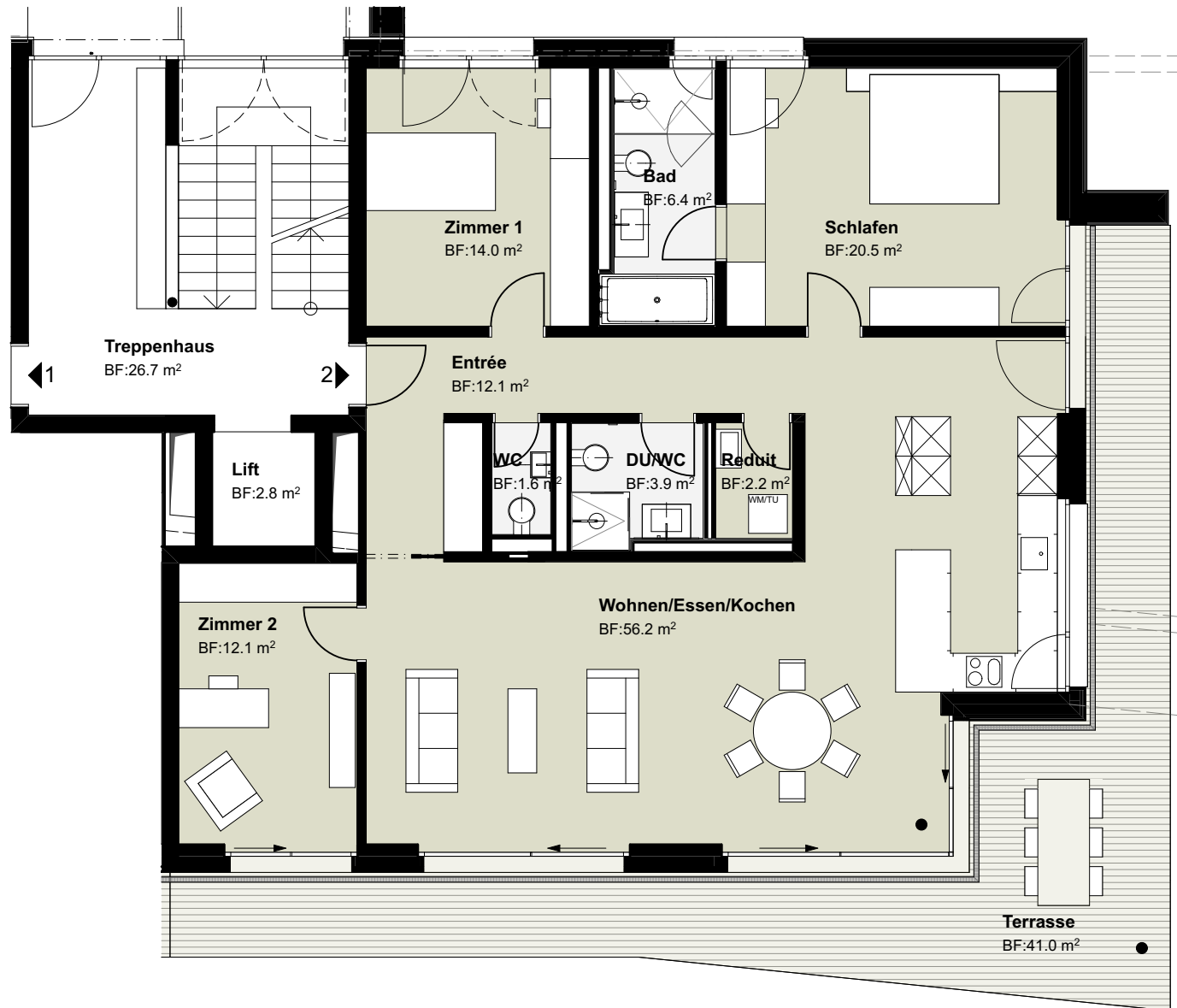
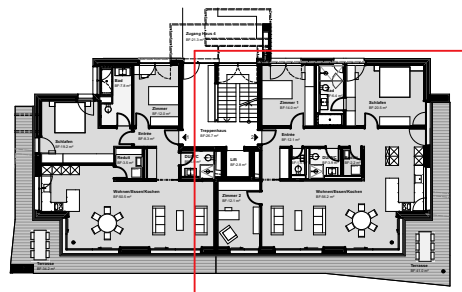
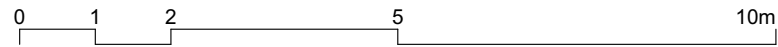


# Kusenstr. 4+6, Künsnacht

Grundriss-EG-Haus-6-WHG2

06.10.2016

1:100



**4.5-Zimmerwohnung EG H6**  
Wohnung 2  
Wohnfläche 129.0 m<sup>2</sup>  
Terrassenfläche 41.0 m<sup>2</sup>